

**LIFETIME WARRANTY\***

**OX 6062**

**OX 6152**

**OX 6202**



### A range of laboratory oscilloscopes, compact multifunction diagnostic tools!

- Three complementary tools in one, for record capacity and efficiency: **OSCILLOSCOPE; RECORDER-MULTIMETER; FFT ANALYZER.**
- Sampling rate: 1 GS/s in one-shot and 50 GS/s in ETS mode
- 2 x 300 V Cat II measurement channels and up to 4 curves on screen
- Standard real-time FFT analysis and calculation functions on channels
- 2 independent 200 kHz, 8,000-counts, TRMS digital multimeters
- Colour or black & white LCD screen with tactile faceplate
- 28 direct control keys, "Windows-like" menus and graphical commands (touch screen)
- Multi-interface communication connector: RS232, USB and Ethernet with WEB server (depending on accessories)
- Storage on removable SD Card\* (\*depending on model)



**OX 6000 oscilloscopes,  
streamlined for high performance!**

## UNIQUE STREAMLINED DESIGN

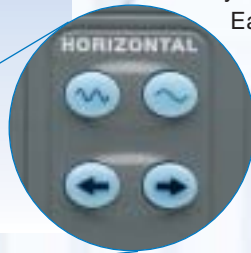
Easy to handle, compact and lightweight, the OX6000 instruments combine the functions of a recorder-multimeter and an FFT analyzer.



## DIRECT ACCESS AND INSIGHT NAVIGATION

With **only 28 direct access keys** with different modes and parameters, its ergonomics and its Windows-Like universal menus, available in 5 languages, the oscilloscope is extremely easy to use.

Each of the keys on the front panel enables immediate selection or adjustment (time base, printing ...)



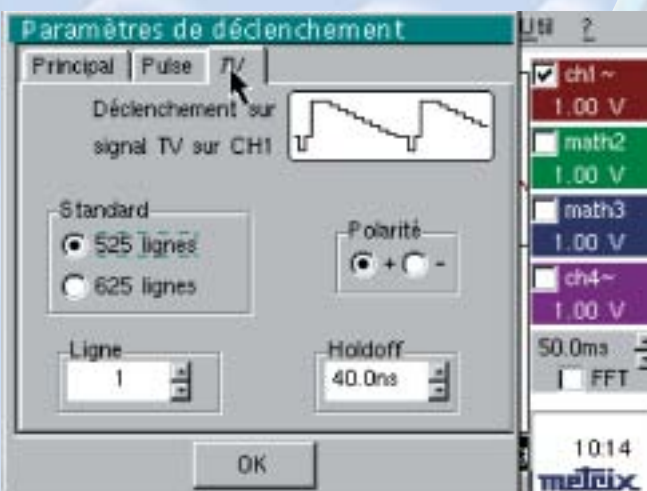
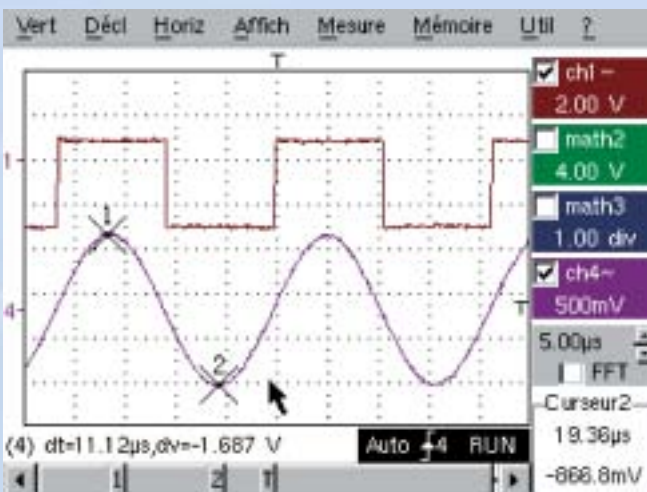
## EXTENSION OF MEMORY CAPACITY

When equipped with an SD Card, users can store all the data (reference curves, instrument settings, screenshots) up to 2 GB. Its adapter makes transferring data to a PC particularly simple.

## GRAPHICAL SETTINGS

The touch screen and its magnetised stylus also make it possible to access your settings directly on-screen using graphic elements that you can move, such as trace position, trigger level, cursors or zoom.

A display zone at the bottom right of the screen constantly displays the current setting, e.g. the value of cursor 2.



## SIGNAL ACQUISITION

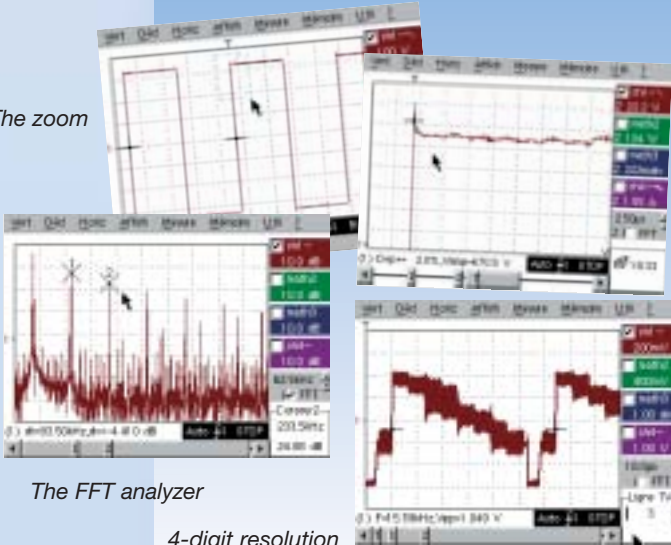
In terms of performance, the OX 6000 instruments provide fast sampling and high resolution with their **10-bit / 1 Gs/s converter**, sampling at 50 Gs/s on periodic signals, and 2 ns transient capture, which avoids under-sampling.

- Large input dynamic: 2.5 mV to 10 V/div.,
- Advanced activation functions (Pulse, TV, associated signal..), on a single screen.
- Filters: 15 MHz, 1.5MHz and 5kHz, making it possible to adapt to various applications: electrical energy, electrical engineering, automotive, medical, physical measurements, ...

**OX 6000 oscilloscopes,  
streamlined for high performance!**

## EASILY ACCESSIBLE HIGH PERFORMANCE

The zoom



The FFT analyzer

4-digit resolution

### ADVANTAGES OF THE 10-BIT CONVERSION

- **Zoom**  
The **vertical resolution** of the 10-bit converter, which is **4 times higher** than that of a traditional 8-bit converter, is operated with graphic Winzoom.
- **FFT ANALYZER**  
Calculated on **2,500 samples**, the FFT analysis can be adjusted automatically by the Autoset key. The **10-bit conversion** improves the dynamic to 60 dB and provides **optimum accuracy** for frequency and amplitude measurements.
- The 10-bit converter provides also a **4-digit resolution** and unrivalled accuracy.

### AUTOMATIC MEASUREMENTS

The **19 automatic measurements** are displayed directly by pressing a key.

For greater reliability and accuracy, a specific measurement zone can be selected by framing with the manual cursors that are accessed via a dedicated key or using the stylus on the touch screen.



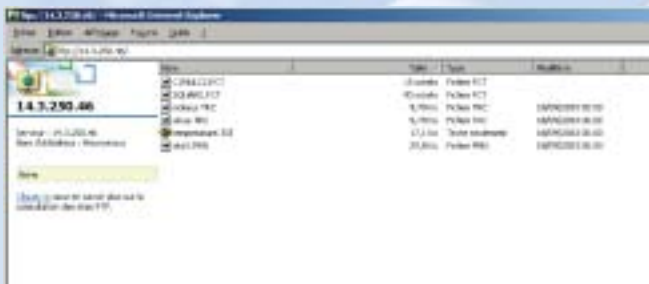
### COMMUNICATIONS EXPERT

Thanks to an **Ethernet (10 MB transfer)** interface and a **Web server**, the OX6000 products provide new working tools that are very good value-for-money.

- Printing on **network printers**
- Remote management
- **Exchange of files** on FTP server

In addition, your instrument can be constantly upgraded by free downloading new functions on the support site.

Ethernet configuration



Web Server and  
FTP file exchange

## TECHNICAL FEATURES

**OX 6062**

**OX 6152**

**OX 6202**

### USER INTERFACE

Type of display	5" 7 colour or B&W* LCD (115 x 86 mm) - 320 x 240 – CCFL backlighting (adjustable standby)		
Display of curves on-screen	4 curves + 4 references		
Controls	28 direct access controls & shortcuts – 1 M/A key and standby Touch screen - "Windows-like" menus and graphic controls 5 languages, on-line menus & help (English, French, German, Italian and Spanish)		

### VERTICAL

Bandwidth	60 MHz	150 MHz	200 MHz
Number of channels	15 MHz bandwidth limiter, 1.5 MHz or 5 kHz 2 channels - 300 V/CAT II		
Vertical sensitivity	15 x 2.5 mV-100 V/div calibres (± 2 %)		
Vertical Zoom	One Click Winzoom system (10-bit converter and graphic zoom directly on-screen) - x 16 max		
Probe factors	1/10/100/1,000 or any scale – definition of measurement unit		

### HORIZONTAL

Scanning speed	35 x 1 ns calibres/div et 200 s/div. - 100ms to 200s/div Roll Mode (± 0.1%)		
Horizontal Zoom	One Click Winzoom system (graphic zoom direct on-screen) - x 5 maximum		

### ACTIVATION

Mode	Auto, Normal, Single shot, Auto Level 50%/CH1, CH2, EXT, LINE Front, Pulse width (20 ns-20 s), field TV or line TV, Hold -Off		
------	--	--	--

### DIGITAL MEMORY

Maximum sampling	10 bits - 50 Gs/s in Repetitive - 1 Gs/s in single shot 2,500 samples per channel GLITCH Mode Duration ≥ 2 ns/Envelope, Averaging (Factors 2 to 64)/ XY Mode		
------------------	--	--	--

### OTHER FUNCTIONS

AUTOSET	Complete AUTOSET in less than 5 s, with recognition of channels FFT (Lin or Log scales) - Functions +, -, x/with management of coefficients & units Measurements: 2 or 3 cursors & 19 automatic measurements – 10-bit resolution, 4-digit display		
---------	---	--	--

### MULTIMETER (except OX6202E-C) 2 channels – 8,000 samples + min/max bargraph - TRMS – Timestamped graphic recording (5 min to 31 days)

AC, DC, AC + DC voltage	400.0 mV to 300.0 VRMS or 400.0 VDC - VDC accuracy 0.5%L+5D – bandwidth 200 kHz		
Resistance	80.00 Ω to 32.00 MΩ - accuracy 0.5%L+ 5D – Fast continuity test 10 ms		
Other measurements	Capacities 5.000 nF to 5.000 mF/Frequency 200.0 MHz/Temperature (Pt100)/Diode test 3.3 V		

### REMOVABLE STORAGE MEDIUM Storage on SD Card up to 2 GB – supplied with minimum 512 MB card (SD Card version only)

## GENERAL SPECIFICATIONS

Network screen printout (standard), RS232 (standard) or Centronics (optional accessory)	11 B&W or Colour Drivers: IBM Proprinter, Epson ESC/P, Canon HP PCL, Seiko DPU411, Postscript Image Files: ".BMP" approx. 10 KB, ".GIF" approx. 5 KB (storage, RS232 transfer or Ethernet)		
PC Communication	10 MB local Ethernet, RS 232 (maxi 115 kbs) or USB (option) - 10 MB remote Ethernet and web server "Sx-Metro" PC software (optional)		
Mains supply	Adjustable standby 98-264 V multi-voltage / 47-63 Hz / < 15 W - Adjustable cable		
Mechanical features	230 (h) x 185 (l) x 180 (d) mm - 1.4 kg		
Guarantee/Origin	3 years/France		

\*: Applicable to the SD Card versions – See application conditions at [www.chauvin-arnoux.com](http://www.chauvin-arnoux.com)

### TO ORDER:

**OX6062E-M:** Digital oscilloscope, 2 x 60 MHz, monochrome

**OX6062E-C:** Digital oscilloscope, 2 x 60 MHz, colour

**OX6152E-C:** Digital oscilloscope, 2 x 150 MHz, colour

**OX6202E-C:** Digital oscilloscope, 2 x 200 MHz, colour

**OX6062E-CSD:** Digital oscilloscope, 2 x 60 MHz, SD, colour

**OX6062E-MSD:** Digital oscilloscope, 2 x 60 MHz, SD, monochrome

**OX6152E-CSD:** Digital oscilloscope, 2 x 150 MHz, SD, colour

**OX6202E-CSD:** Digital oscilloscope, 2 x 200 MHz, SD, colour

#### Accessories supplied:

2 switchable probes 1/1 – 1/10 (depending on model, 1 RS232 cable, 1 crossed Ethernet cable, 1 power supply cable, 1 operating manual and 1 programming manual.

#### Optional accessories:

**HX0079:** SD memory card + SD-USB adapter

**HX0080:** SD-USB adapter

**HX0003:** Safety probe, 1/10, 150 MHz, 400 V

**HX0004:** Safety probe, 1/10, 250 MHz, 1,000 V

**HX0210:** Standard probe, 1/1, 1/10, 100 MHz, 300 V CAT II

**HX0220:** Standard probe, 1/1, 1/10, 200 MHz, 300 V CAT II

**SX-METRO/P:** SX-METRO kit



**FRANCE**  
Chauvin Arnoux  
190, rue Championnet  
75876 PARIS Cedex 18  
Tel: +33 1 44 85 44 85  
Fax: +33 1 46 27 73 89  
info@chauvin-arnoux.fr  
www.chauvin-arnoux.fr

**UNITED KINGDOM**  
Chauvin Arnoux Ltd  
Waldeck House - Waldeck Road  
MAIDENHEAD SL6 8BR  
Tel: +44 1628 788 888  
Fax: +44 1628 628 099  
info@chauvin-arnoux.co.uk  
www.chauvin-arnoux.co.uk

**MIDDLE EAST**  
Chauvin Arnoux Middle East  
P.O. BOX 60-154  
1241 2020 JAL EL DIB (Beyrouth) LEBANON  
Tel: +961 1 890 425  
Fax: +961 1 890 424  
camie@chauvin-arnoux.com  
www.chauvin-arnoux.com

For assistance and ordering

